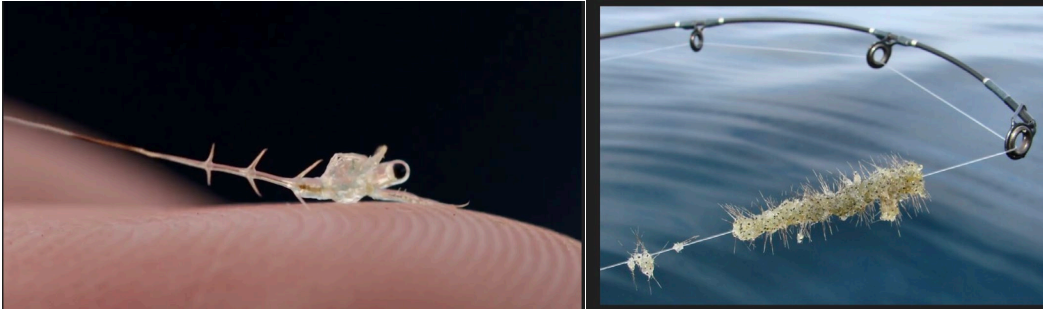
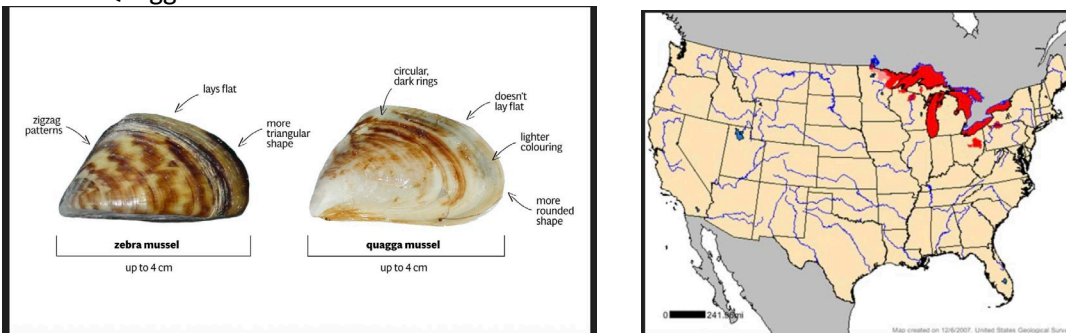


Wake Boats and Aquatic Invasive Species (AIS)

Wake boats have large 1,000-3,000 lb ballast tanks that cause the boat to plow through the water stern-down. These ballast tanks are filled and emptied when moving a boat from lake to lake. However, the ballast tanks cannot be emptied completely (residual of 10+ gallons of lake water) nor inspected like a live well. These ballast tanks move aquatic invasive species from lake to lake. The two most dangerous ones right now are the Spiny Water Flea



and the Quagga Mussel.



Both have come to our inland lakes from the Great Lakes, having been brought there in the ballast water of transoceanic commercial shipping.

The Spiny Water Flea competes with the small fish for food. The small fish cannot eat the spiny water flea because of the long spine. There are now 20 WI inland lakes that have spiny water flea. Walleyes in these lakes are smaller and less numerous than in clean lakes. For more information, please watch this short video

<https://www.youtube.com/watch?v=HxjcoxamuWM&t=140s>

Quagga mussels compete with native small fish for phytoplankton, alter water clarity, and pollute the lake waters with their excrement. They plug up water intake pipes. Quagga mussels are already in Lake Geneva.

Call or email your Town Board supervisors and urge them to act to prevent artificially-enhanced wake boats and the aquatic invasive species they may bring. We do not want AIS in Clark Lake. Once they are here, they cannot be eradicated except by draining the lake.

For Jacksonport: <https://jacksonportwi.gov/town-board/>

For Sevastopol: <https://townofsevastopolwi.gov/town-board/>