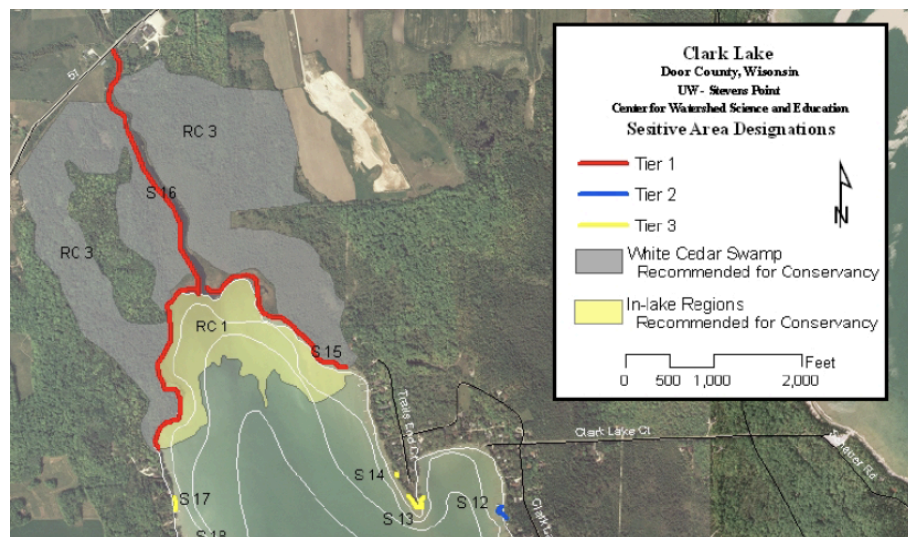


No Motor in the North End

Just a reminder about the North End of Clark Lake where Logan Creek enters. There are 4 buoys marking this area where **no boats with motors, gas or electric**, are allowed to enter. It is filled with healthy vegetation and habitat for fish, invertebrates, and birds.



This is because the area is WDNR-designated Tiers 1-3 for its environmental sensitivity. It requires the highest level of protection due to its critical ecological value. It is part of the Ridges Sanctuary and needs to be respected and preserved.



CLAA is aware that one of the four buoys is still missing – it needed a new cement anchor poured. It should be in shortly.

Any questions, contact Gwenn Graboyes (414) 315-4546 or by email at gwenn.graboyes@gmail.com