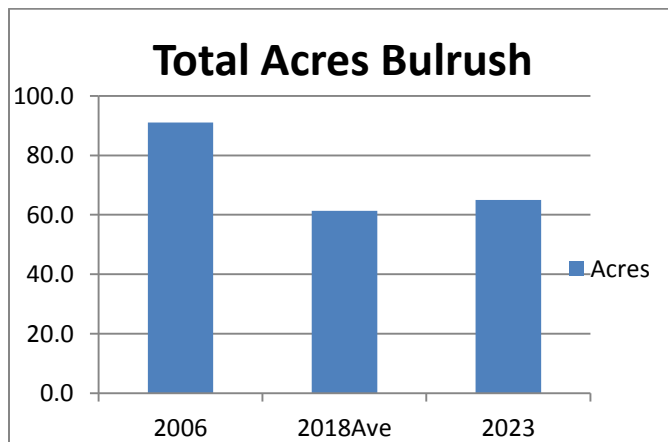
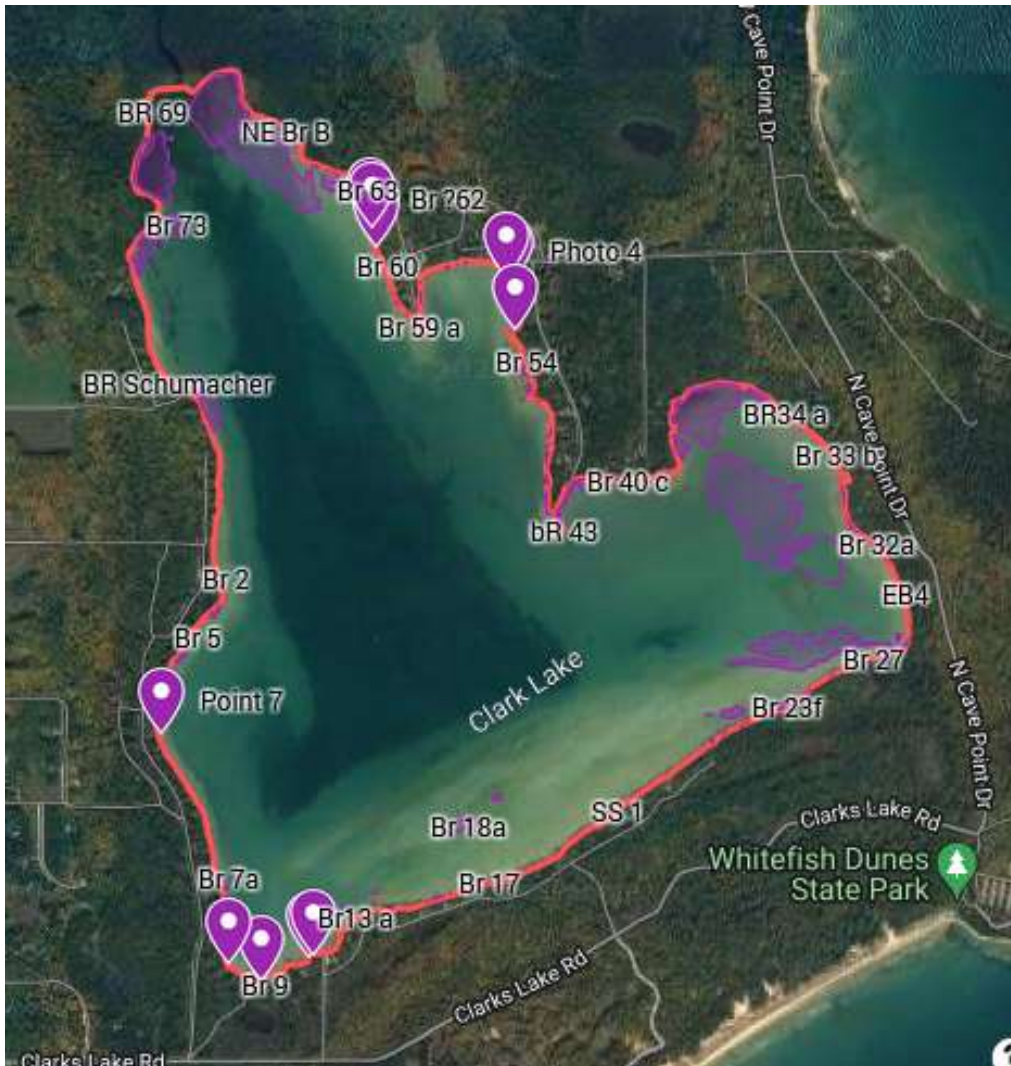
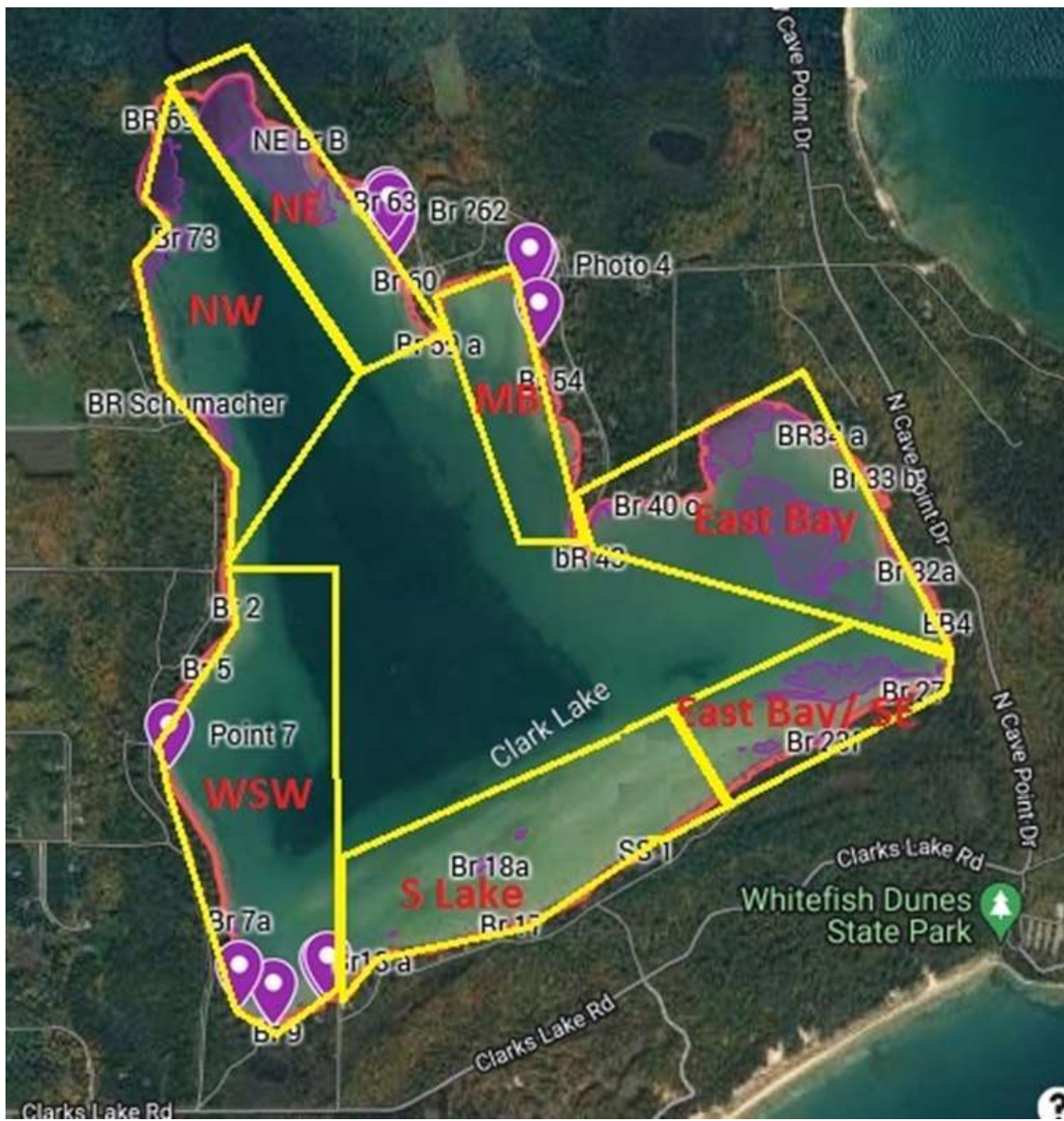


2023 All Lake Bulrush Map

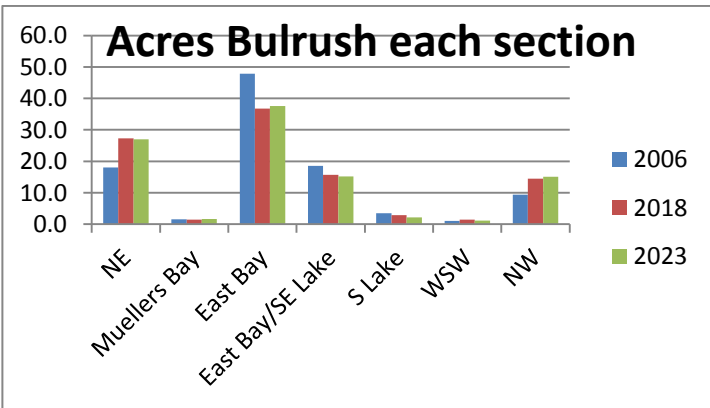
As discussed in prior articles, bulrush are an important part of lake ecology. In addition, they reflect a measure of lake health. This is a follow up of the 2006 and 2018 bulrush mapping. All maps and data tables are available with links on the WQVC website. Measurements are Acres.



Since 2018 the total acres of bulrush has increased slightly but is still significantly less than 2006. The increase from 2018 is a few percent and may only reflect measuring variability but is an encouraging finding.



Map title	2006	2018Ave	2023
East Bay	43.5	22.5	24.5
East Bay/SE Lake	16.9	9.6	9.9
Muellers Bay	1.5	0.9	1.1
NE	16.5	16.7	17.6
NW	8.5	8.9	9.8
S Lake	3.2	1.8	1.4
WSW	1.0	0.9	0.8
total	91.1	61.3	65.0

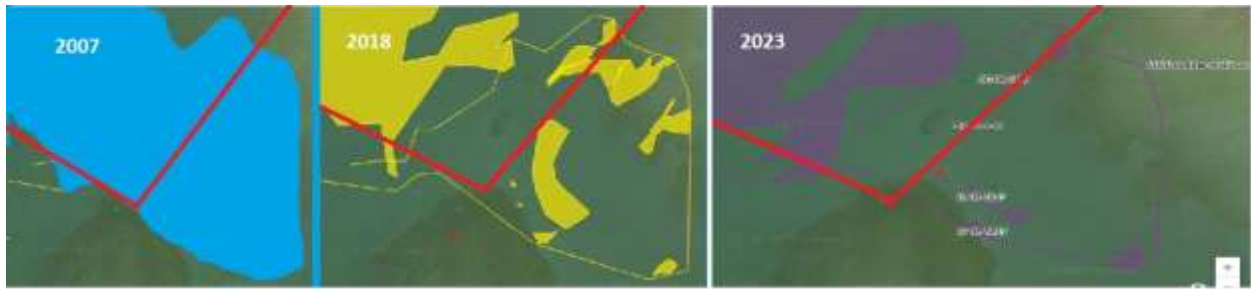


Both the Northeast and Northwest lake continue to be better than 2006. Mueller Bay and the WSW shore are stable from 2006. South Lake although a small proportion of the total lake bulrush is still losing ground.

A few small transplant sites are doing well.

There are some new small near shore clumps that reflect local owner good stewardship.

The largest loss compared to 2006 continues to be in the East Bay. Although the total measured acres did increase slightly since 2018 the unprotected area at the SE tip of BR 36 shows marked degradation. The red line marks the extent of the mandated slow no wake zone in this area.



Please encourage your visitors and renters to observe the voluntary slow no wake zone since this protects the bulrush in addition to our shore and other vulnerable habitats.

