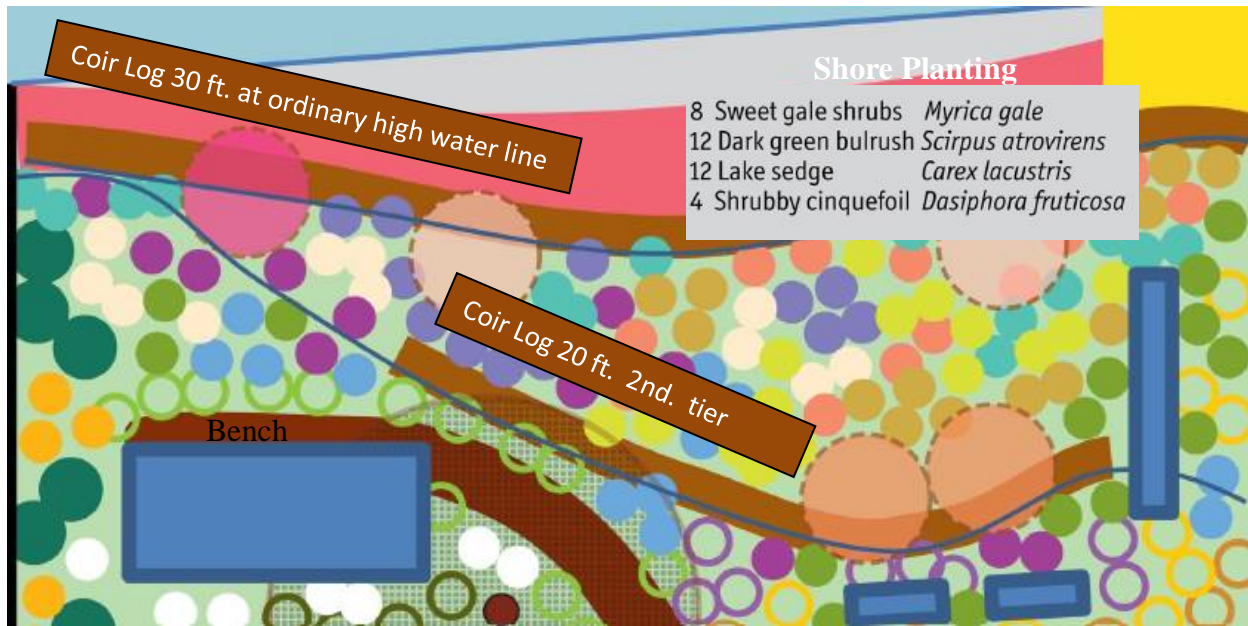


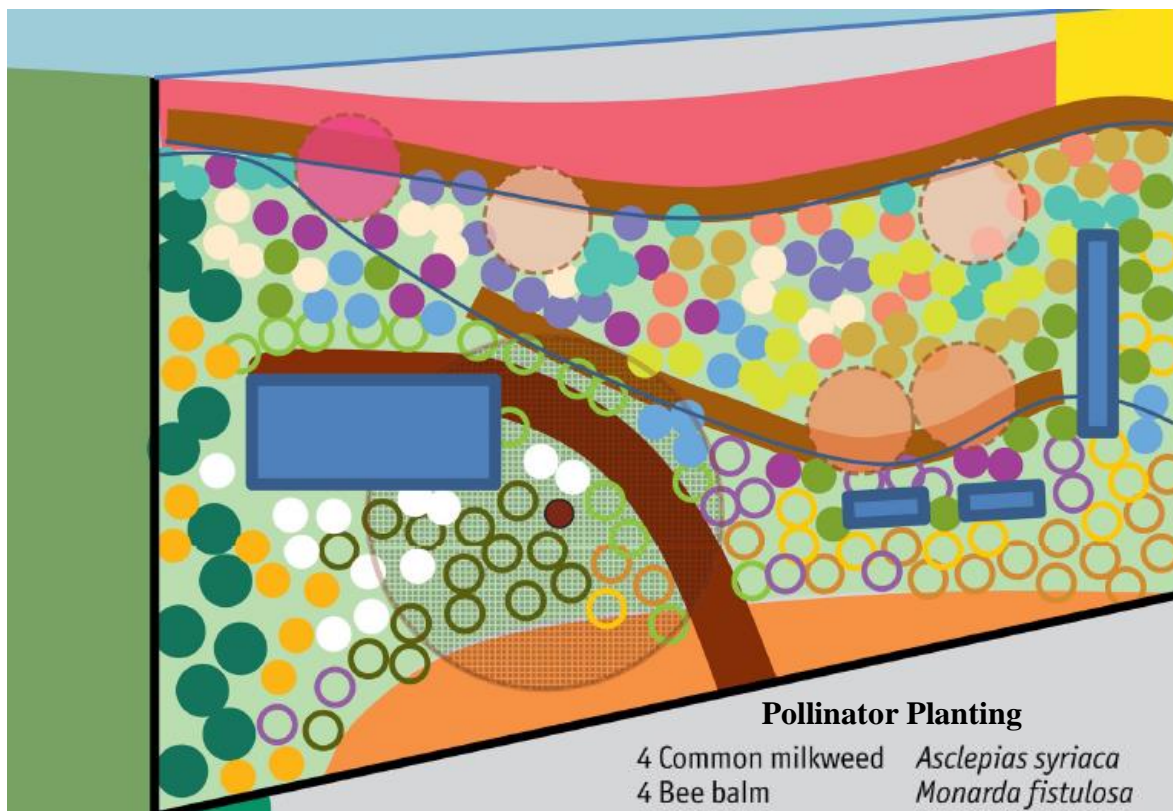
The Plan: Supplemental areas

The bank is eroding and partially undercut so there will be two tiers of the coir logs as biologic support (brown).

Additional plants along the shore (pink) are included as part of shore stabilization. These will include a demonstration of how to transplant native Clark Lake bulrush.

The extra project space includes a pollinator garden (peach semicircle) and a line of shrubs along the northern border (dark green).





Pollinator Planting

4 Common milkweed	<i>Asclepias syriaca</i>
4 Bee balm	<i>Monarda fistulosa</i>
8 Little bluestem grass	<i>Schizachyrium scopulorum</i>
4 Prairie cinquefoil	<i>Drymocallis arguta</i>
4 Black-eyed Susan	<i>Rudbeckia hirta</i>
4 Stiff goldenrod	<i>Solidago rigida</i>
8 Nodding wild onion	<i>Allium cernuum</i>
4 Smooth blue aster	<i>Aster laevis</i>

Old porta potty location

Supplemental shrub planting:

Approximately 24 feet long.

2 Beaked hazelnut	<i>Corylus cornuta</i>
2 American currant	<i>Ribes americana</i>
4 Choke cherry	<i>Prunus virginiana</i>
2 Highbush Cranberry	<i>Viburnum trilobum</i>

New porta potty location